



GAT MONTHLY MEMBERSHIP PROGRESS REPORT

Results as of: 1/31/2023

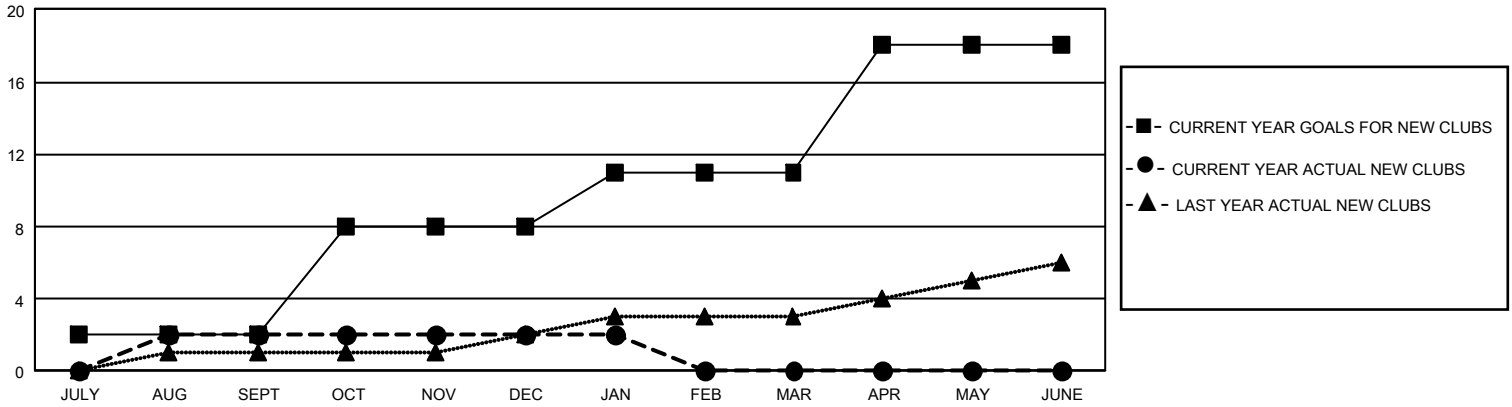
GMT Constitutional Area 1, Group N

REPORT DOES NOT INCLUDE CLUBS IN UNDISTRICTED AREAS.

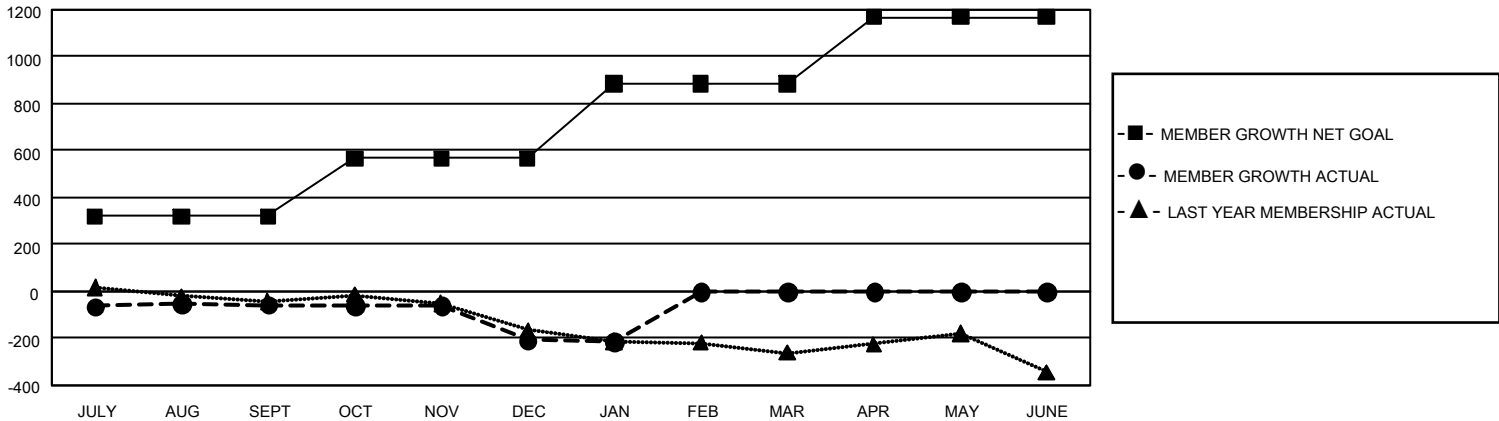
Clubs			
RESULTS FOR 2022-2023			
QUARTER	NEW CLUB GOAL	NEW CLUBS	DROPPED CLUBS
JULY/AUG/SEPT	6	2	4
OCT/NOV/DEC	18	0	6
JAN/FEB/MAR	9	0	3
APR/MAY/JUNE	21	0	0

Members			
RESULTS FOR 2022-2023			
QUARTER	MEMBER GROWTH NET GOAL	MEMBER GROWTH ACTUAL	DROPPED MEMBERS ACTUAL (including transfers)
JULY/AUG/SEPT	319	350	378
OCT/NOV/DEC	247	301	423
JAN/FEB/MAR	320	127	128
APR/MAY/JUNE	282	0	0

GOALS AND ACTUAL NEW CLUBS CUMULATIVE



GOALS AND ACTUAL MEMBERS CUMULATIVE



DROPPED CLUBS: 13	228 CLUBS OF 544 ADDED 1 OR MORE NEW MEMBERS	GENDER DISTRIBUTION	
		MALE 7,719 (64.11%)	FEMALE 4,313 (35.82%)
DROPPED MEMBERS		NON BINARY 2 (0.02%)	PREFER NOT TO ANSWER 7 (0.06%)
DECEASED 121	CLICK HERE FOR CUMULATIVE MEMBERSHIP DATA	TOTAL FAMILY UNIT MEMBERS 2,330	
CLUB CANCELLED 41		FAMILY MEMBERS PAYING HALF DUES 1,194	
OTHER 766			
TOTAL 928			